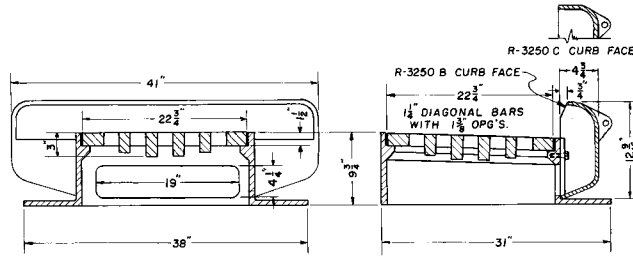


■ Note: When specifying/ordering grates, refer to "Choosing the Proper Inlet Grate" on pages 125-126.
 For a complete listing of FREE OPEN AREAS and WEIR PERIMETERS of all NEENAH grates, refer to pages 327-332.

R-3250-B Combination Inlet Frame, Grate, Curb Box

Heavy Duty

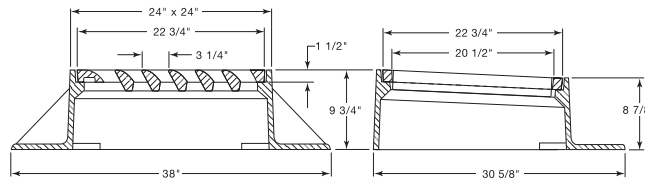


CATALOG NUMBER	GRATE TYPE	SQ. FT. OPEN	WEIR PERIMETER LINEAL FEET
R-3250-B	R	1.4	5.8
R-3250-C	R	1.4	5.8

Also available with straight face curb box, order **R-3250-C**.

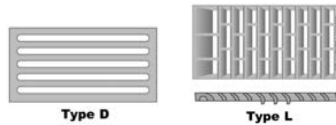
R-3250-BSP Catch Basin Frame, Grate

Heavy Duty



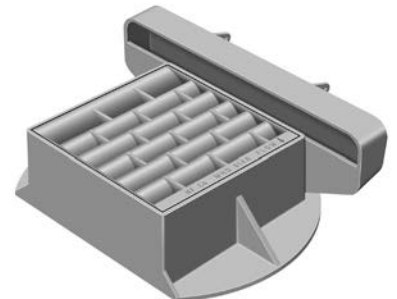
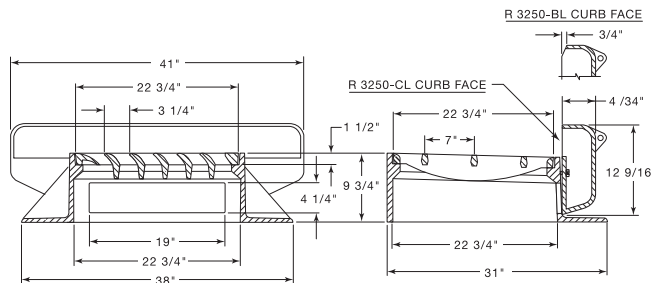
CATALOG NUMBER	GRATE TYPE	SQ. FT. OPEN	WEIR PERIMETER LINEAL FEET
R-3250-BSP	V	1.3	7.6
R-3250-BSP	D	1.4	7.6
R-3250-BSP	L	1.0	7.6

Standard Grate (shown): Type V
 Also available with grate Type D or Type L.



R-3250-CL Combination Inlet Frame, Grate, Curb Box

Heavy Duty



CATALOG NUMBER	GRATE TYPE	SQ. FT. OPEN	WEIR PERIMETER LINEAL FEET
R-3250-CL	L	1.0	5.8
R-3250-BL	L	1.0	5.8

Also available with tapered face curb box, order **R-3250-BL**.

Supplied By:

**TRENCHDRAIN
 SUPPLY**

877-903-7246

www.trenchdrainsupply.com